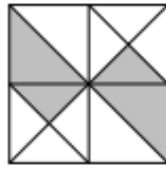


Interleaf 9

- 1) What fraction of the larger square has been shaded?



- 2) Calculate 2.3×0.09

- 3) Simplify fully:

a) $4x \times 7x$ b) $4x - 2y + x - 5y$ c) $x^2 + 3x + 5x^2 - 7x$

4) Expand and simplify $8(3 - 2x)$

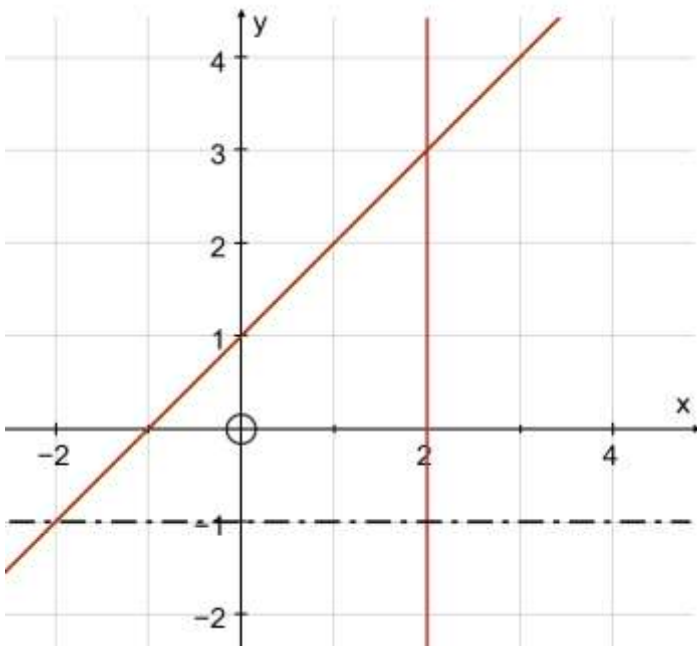
- 5) Solve for x

$$4x - 1 = 9$$

- 6) My phone bill was £28 per month and then increased by 15%.

What is my phone bill now?

- 7) Write down the equation of all three lines below



- 8) Use inequalities to describe the triangular region enclosed by all three lines

Answers 1) $\frac{3}{8}$ 2) 0.207 3a) $28x^2$ b) $5x - 7y$ c) $6x^2 - 4x$ 4) $24 - 16x$ 5) $\frac{5}{2}$ 6) £32.20

7) $y = -1, x = 2, y = x + 1$ 8) $y \leq x + 1, x \leq 2, y > -1$